

TECO

OUTLINE DIMENSIONS  
3-PHASE INDUCTION MOTOR

FRAME NO :

C180LC

POLES

KW

HP

SYNCH RPM

4

30

40

1500

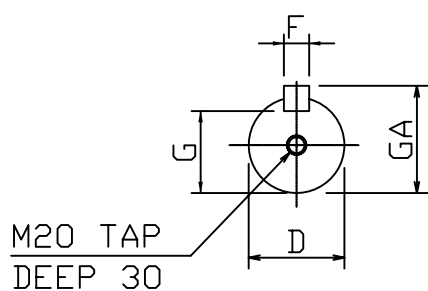
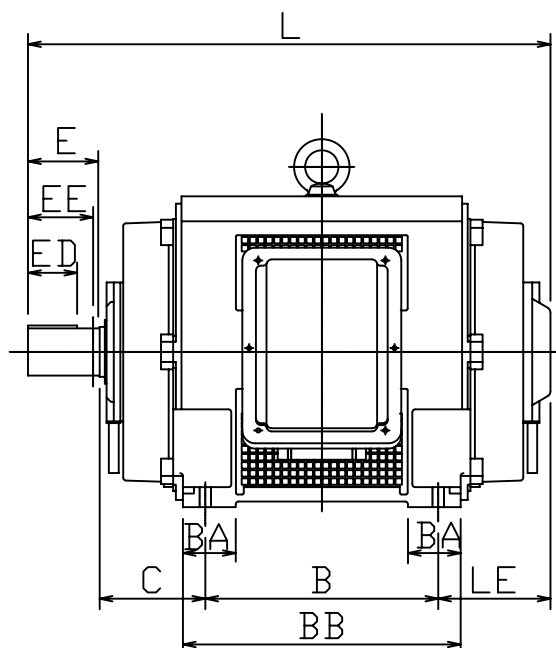
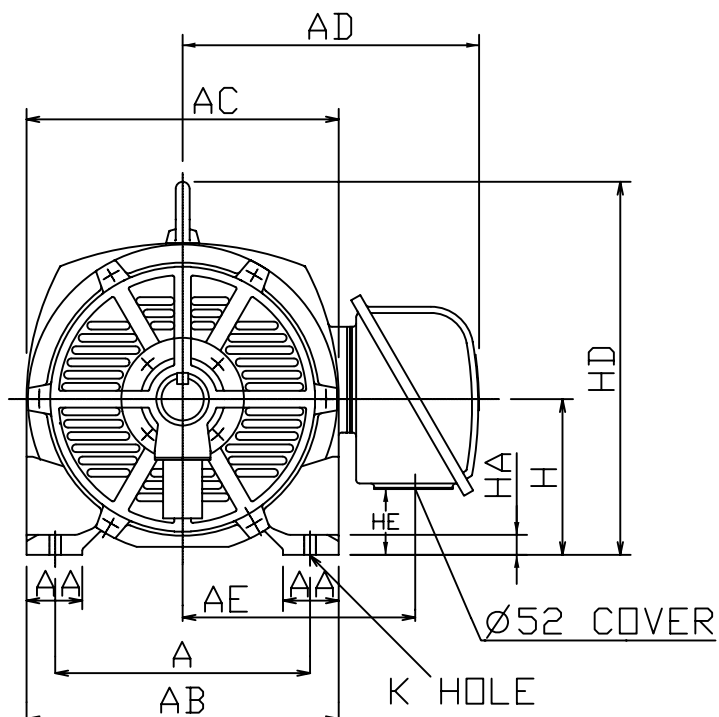
6

18.5

25

1000

Open Drip-proof Type Squirrel-Cage Rotor.



NOTES:

1. FOOT MOUNTED IM1001.
2. TYPICAL DIMENSIONS ONLY FOR CERTIFIED DIMENSIONS REFER TO TECO.
3. FOR DIRECT DRIVE.

DIMENSIONS IN MM

|           |    |     |    |     |     |     |     |     |     |     |     |     |
|-----------|----|-----|----|-----|-----|-----|-----|-----|-----|-----|-----|-----|
| FRAME NO. |    | A   | AA | AB  | AC  | AD  | AE  | B   | BA  | BB  | C   | D   |
| C180LC    |    | 279 | 75 | 355 | 369 | 303 | 245 | 279 | —   | 335 | 121 | 55  |
| E         | ED | EE  | F  | G   | GA  | H   | HA  | HD  | HE  | K   | L   | LE  |
| 110       | 80 | —   | 16 | 49  | 59  | 180 | 20  | 415 | 104 | 15  | 640 | 130 |
|           |    |     |    |     |     |     |     |     |     |     |     |     |

|       |    |            |
|-------|----|------------|
| DWN.  | EJ | 01. 10. 09 |
| CHKD. | DK | 01. 10. 09 |
| APPD. | JF | 01. 10. 09 |

東元電機股份有限公司  
TECO ELEC. & MACH. CO., LTD.  
TAIWAN R. O. C.

DWG NO.  
30C4  
18C6  
REV : 00