

TECO

OUTLINE DIMENSIONS 3-PHASE INDUCTION MOTOR

FRAME NO :

C250SC

POLES

KW

HP

SYNCH RPM

4

75

100

1500

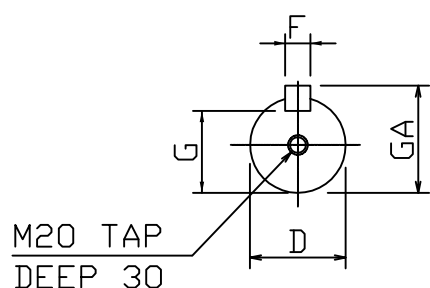
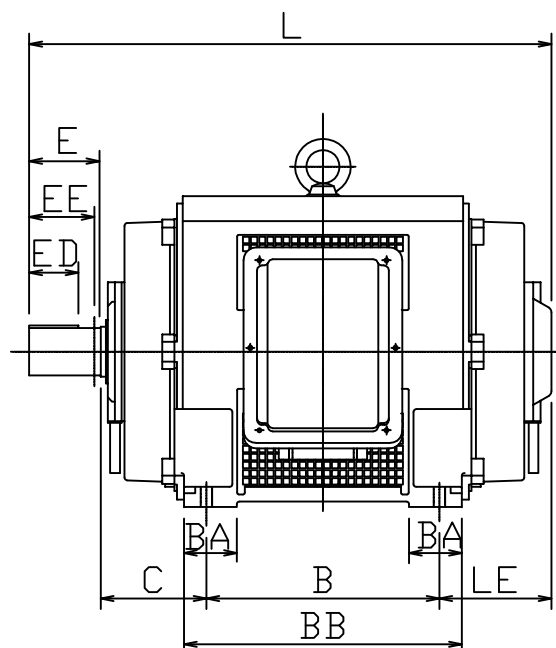
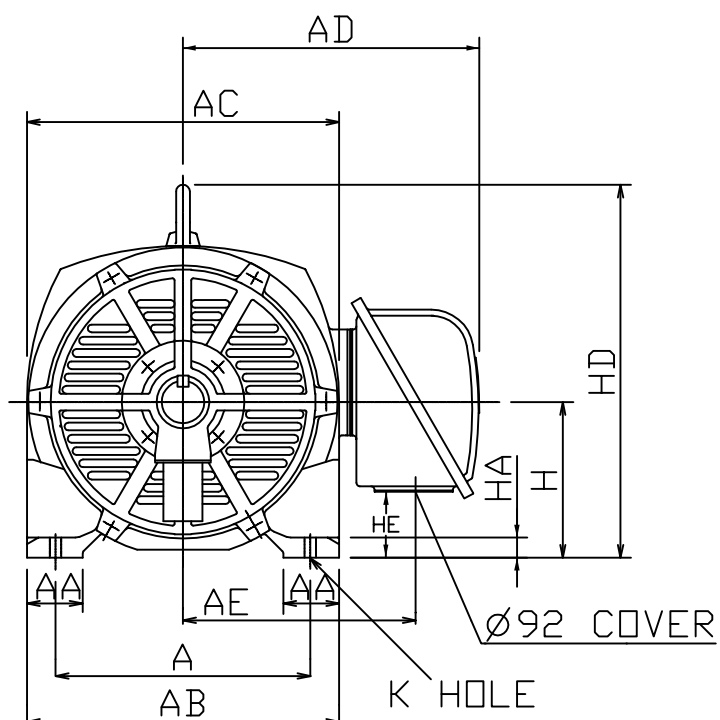
6

45

60

1000

Open Drip-proof Type Squirrel-Cage Rotor.



NOTES:

1. FOOT MOUNTED IM1001.
2. TYPICAL DIMENSIONS ONLY FOR CERTIFIED DIMENSIONS REFER TO TECO.
3. FOR DIRECT DRIVE.

DIMENSIONS IN MM

FRAME NO.		A	AA	AB	AC	AD	AE	B	BA	BB	C	D
C250SC		406	95	500	500	490	375	311	—	380	168	75
E	ED	EE	F	G	GA	H	HA	HD	HE	K	L	LE
140	110	—	20	67. 5	79. 5	250	32	574	71	24	781	162

DWN.	EJ	01. 10. 09
CHKD.	DK	01. 10. 09
APPD.	JF	01. 10. 09

東元電機股份有限公司
TECO ELEC. & MACH. CO., LTD.
TAIWAN R. O. C.

DWG NO. 75C4
45C6
REV : 00