

TECO

OUTLINE DIMENSIONS 3-PHASE INDUCTION MOTOR

FRAME NO :

C280SC

POLES

KW

HP

SYNCH RPM

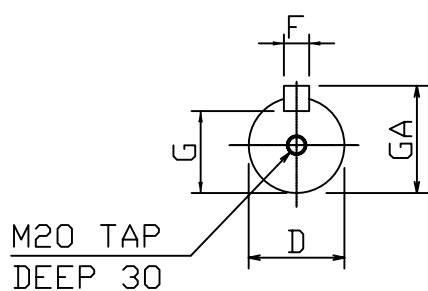
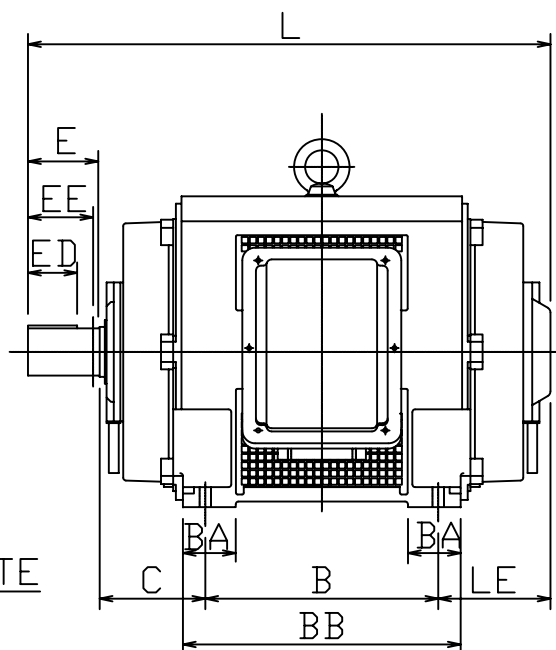
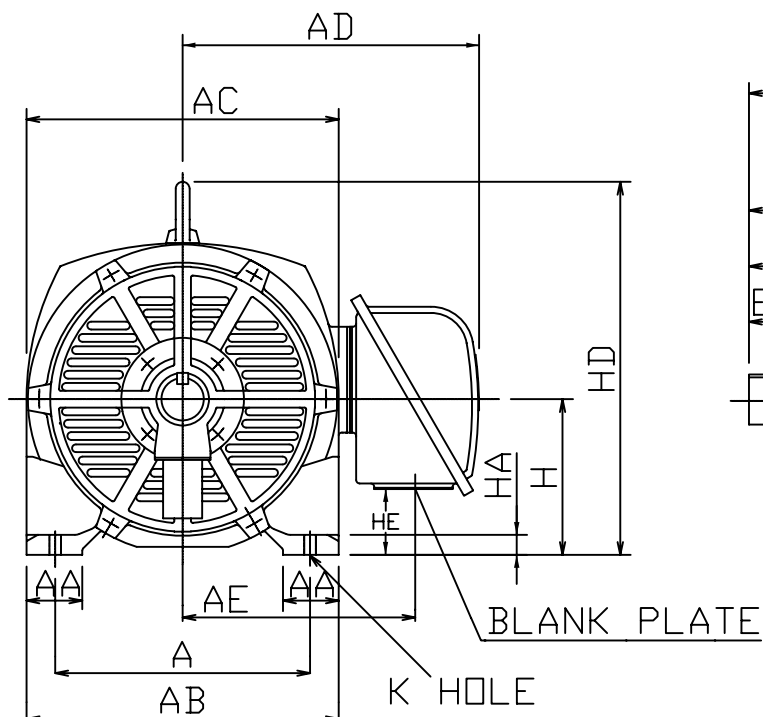
4

110

150

1500

Open Drip-proof Type Squirrel-Cage Rotor.



NOTES:

1. FOOT MOUNTED IM1001.
2. TYPICAL DIMENSIONS ONLY FOR CERTIFIED DIMENSIONS REFER TO TECO.
3. FOR DIRECT DRIVE.

DIMENSIONS IN MM

FRAME NO.		A	AA	AB	AC	AD	AE	B	BA	BB	C	D
C280SC		457	100	560	560	520	405	368	—	450	190	85
E	ED	EE	F	G	GA	H	HA	HD	HE	K	L	LE
170	140	—	22	76	90	280	36	653	101	24	927	199

DWN.	EJ	01. 10. 09
CHKD.	DK	01. 10. 09
APPD.	JF	01. 10. 09

東元電機股份有限公司
TECO ELEC. & MACH. CO., LTD.
TAIWAN R. O. C.

DWG NO. 110C4
REV : 00