



OUTLINE DIMENSIONS 3-PHASE INDUCTION MOTOR

FRAME NO :

C315SC

POLES

KW

HP

SYNCH RPM

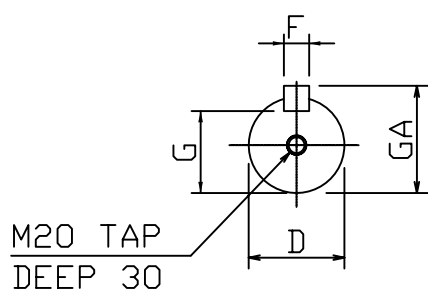
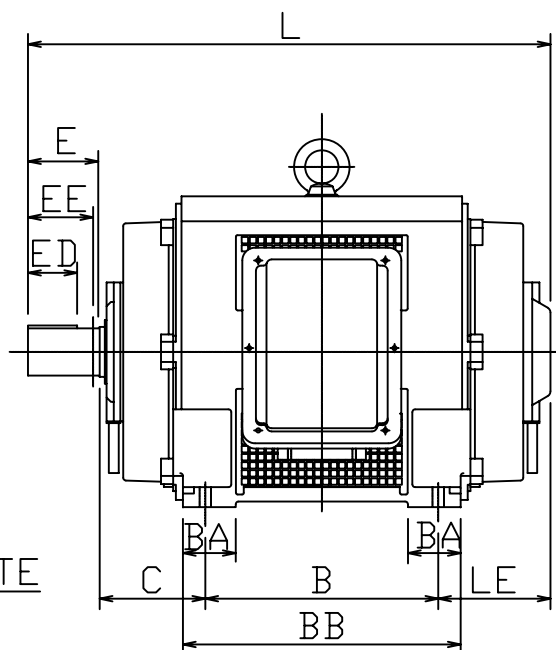
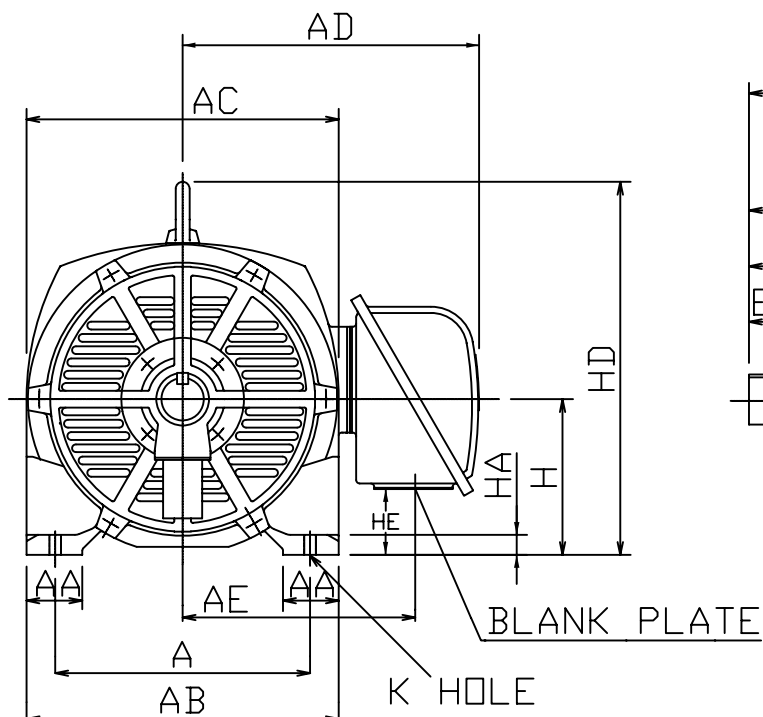
4

185

250

1500

Open Drip-proof Type Squirrel-Cage Rotor.



NOTES:

1. FOOT MOUNTED IM1001.
2. TYPICAL DIMENSIONS ONLY FOR CERTIFIED DIMENSIONS REFER TO TECO.
3. FOR DIRECT DRIVE.

DIMENSIONS IN MM

| FRAME NO. | | A | AA | AB | AC | AD | AE | B | BA | BB | C | D |
|-----------|-----|-----|-----|-----|-----|-----|-----|-----|-----|-----|------|-----|
| C315SC | | 508 | 110 | 610 | 610 | 545 | 430 | 406 | — | 490 | 216 | 90 |
| E | ED | EE | F | G | GA | H | HA | HD | HE | K | L | LE |
| 170 | 140 | — | 21 | 81 | 95 | 315 | 40 | 733 | 136 | 28 | 1019 | 227 |

| | | |
|-------|----|------------|
| DWN. | EJ | 01. 10. 09 |
| CHKD. | DK | 01. 10. 09 |
| APPD. | JF | 01. 10. 09 |

東元電機股份有限公司
TECO ELEC. & MACH. CO., LTD.
TAIWAN R. O. C.

DWG NO. 185C4
REV : 00