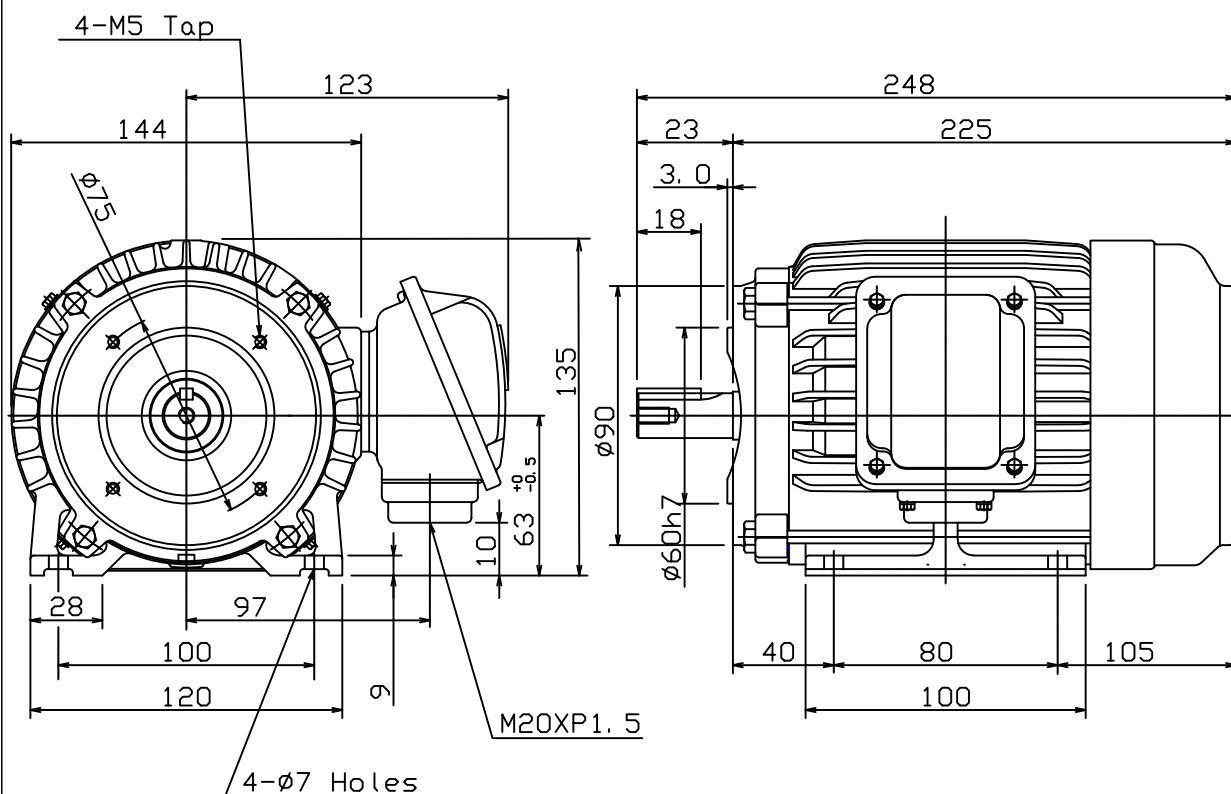


	OUTLINE DIMENSIONS 3-PHASE INDUCTION MOTOR	FRAME NO : D63
---	---	-------------------

POLES	KW	HP	SYNCH RPM
2	0.18	0.25	3000
4	0.18	0.25	1500


Totally Enclosed Fan-Cooled Type, Squirrel-Cage Rotor.



NOTES:

1. FOOT & C FACE MOUNTED IM2101.
2. TYPICAL DIMENSIONS ONLY
FOR CERTIFIED DIMENSIONS
REFER TO TECO.
3. FOR BELT OR DIRECT DRIVE.

FOR MAXe3MINING AND
MAXe3PREMIUM SEVERE DUTY

				
DWN.	EJ	01. 12. 15	東元電機股份有限公司 TECO ELEC. & MACH. CO., LTD. TAIWAN R. O. C.	REV : 00
CHKD.	DK	01. 12. 15		
APPD.	JF	01. 12. 15		