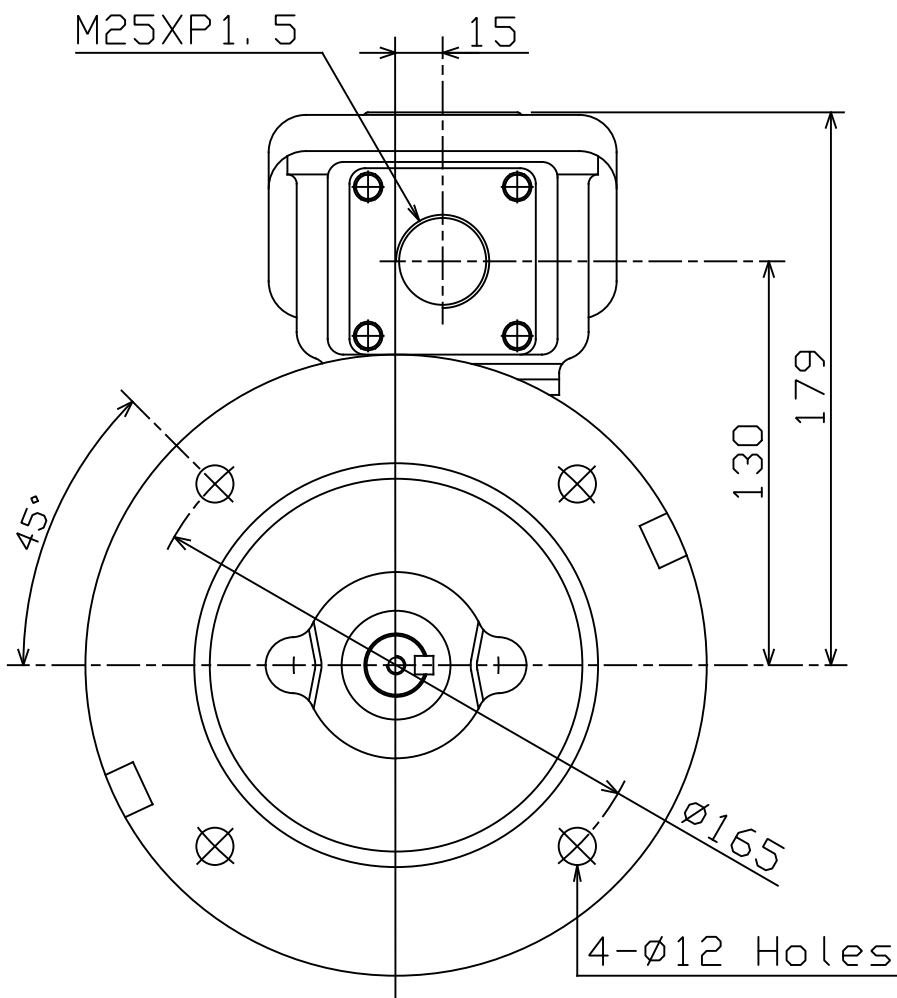
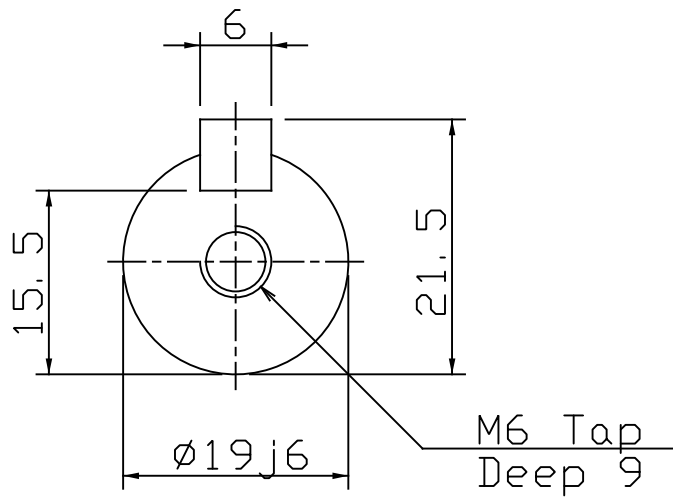
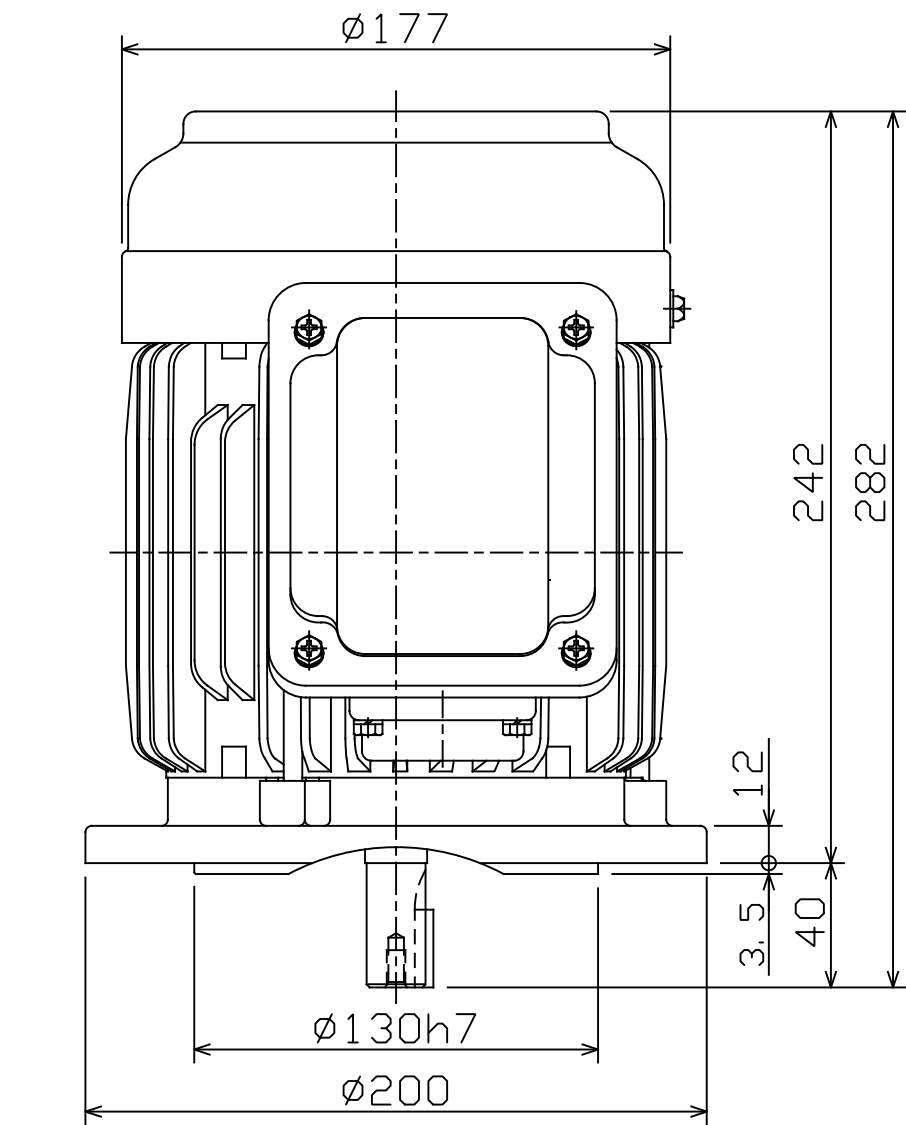


<div> <div>TECO</div>  </div>	<div> <div>OUTLINE DIMENSIONS</div> <div>3-PHASE INDUCTION MOTOR</div> </div>	<div> <div>FRAME NO :</div> <div>D80</div> </div>
---	---	---

POLES	KW	HP	SYNCH RPM
2	0.75, 1.1	1, 1.5	3000
4	0.55, 0.75	0.75, 1	1500
6	0.37, 0.55	0.5, 0.75	1000
8	0.18	0.25	750

Totally Enclosed Fan-Cooled Type, Squirrel-Cage Rotor.



NOTES:

1. FLANGE MOUNTED IM3001.
2. TYPICAL DIMENSIONS ONLY FOR CERTIFIED DIMENSIONS REFER TO TECO.
3. FOR BELT OR DIRECT DRIVE.

FOR MAXe3MINING AND
AND MAXe3PREMIUM SEVERE DUTY

			
---	--	--	--

DWN.	EJ	01. 12. 15	<div> <div>東元電機股份有限公司</div> <div>TECO ELEC. & MACH. CO., LTD.</div> <div>TAIWAN R. O. C.</div> </div>	REV : 00
CHKD.	DK	01. 12. 15		
APPD.	JF	01. 12. 15		