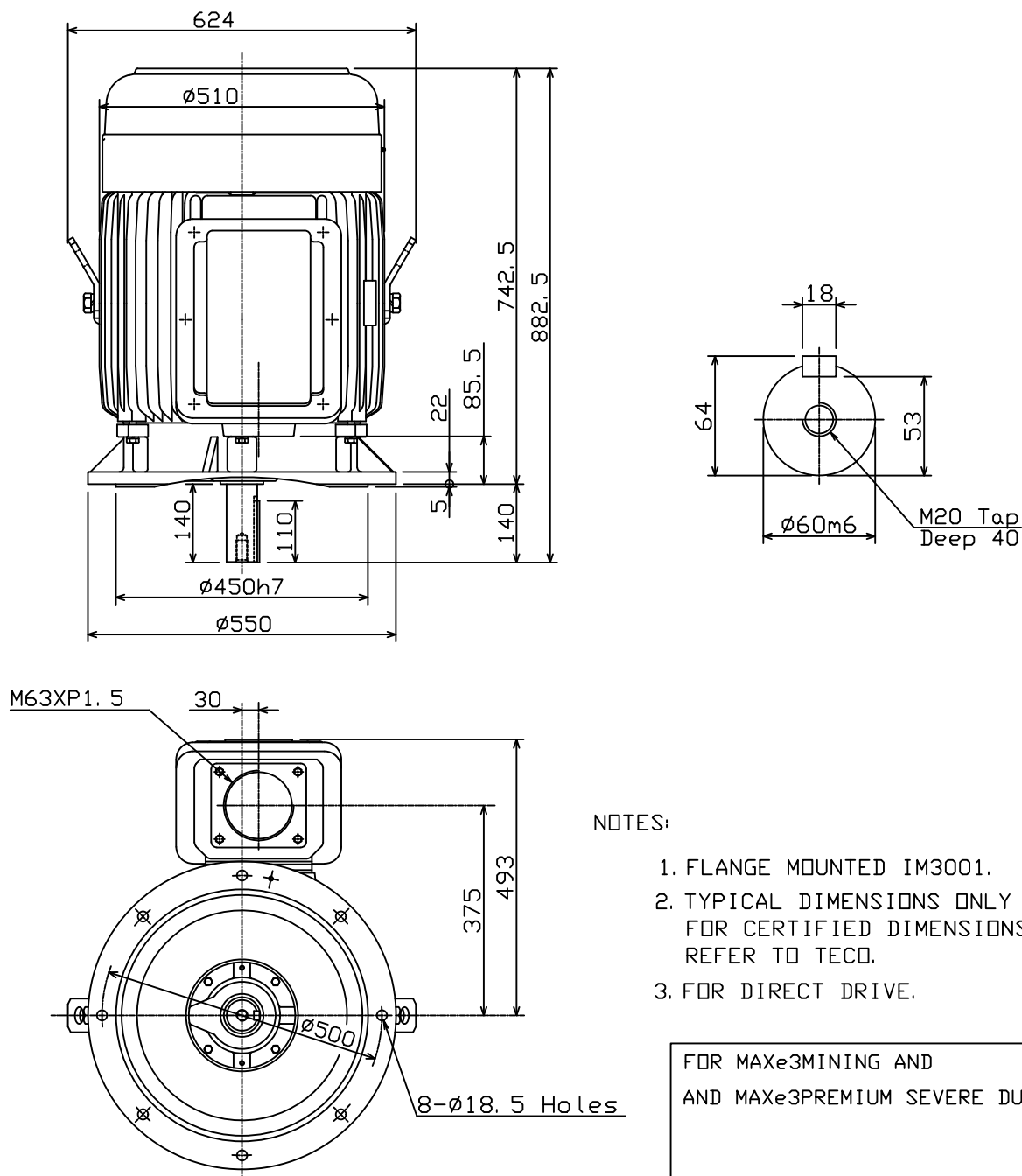


	OUTLINE DIMENSIONS 3-PHASE INDUCTION MOTOR	FRAME NO : D250SA
---	---	----------------------

POLES	KW	HP	SYNCH RPM
2	55	75	3000

Totally Enclosed Fan-Cooled Type, Squirrel-Cage Rotor.



◇				
DWN.	EJ	01. 12. 15	東元電機股份有限公司 TECO ELEC. & MACH. CO., LTD. TAIWAN R. O. C.	REV : 00
CHKD.	DK	01. 12. 15		
APPD.	JF	01. 12. 15		