

TECO

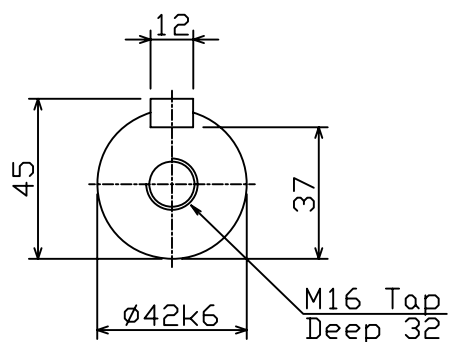
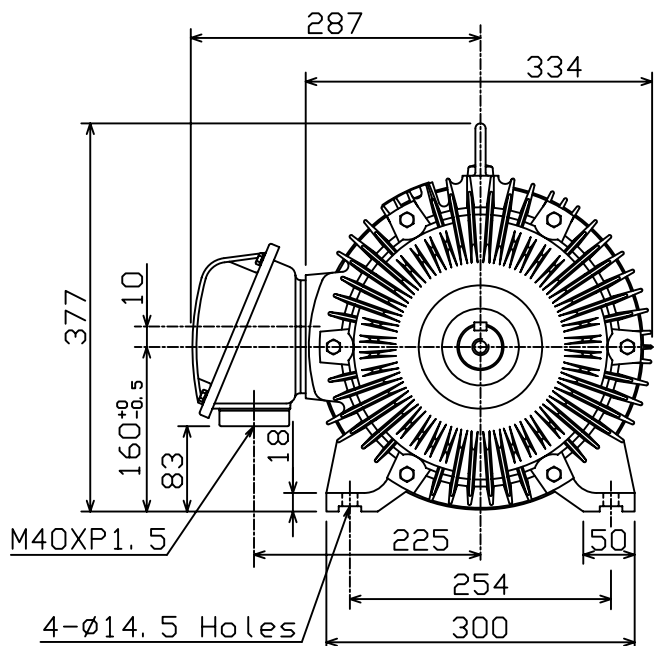
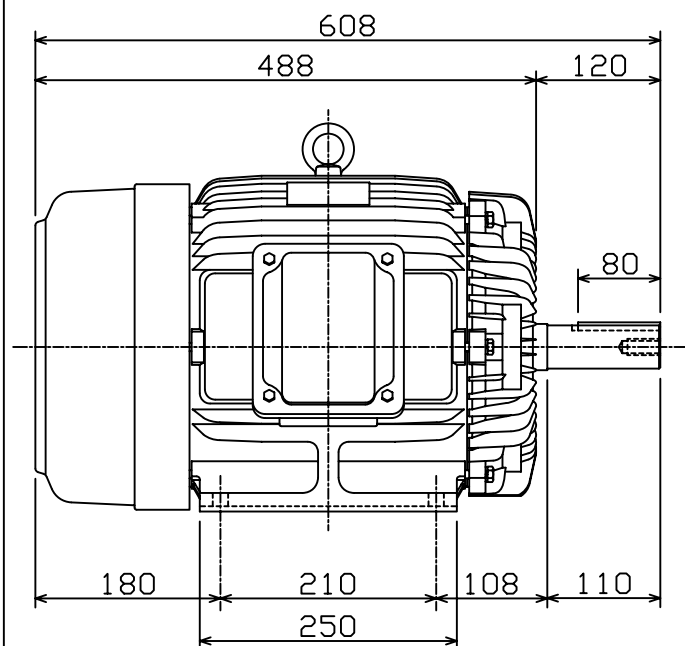
OUTLINE DIMENSIONS 3-PHASE INDUCTION MOTOR

FRAME NO :

D160M

POLES	KW	HP	SYNCH RPM
2	11/15	15/20	3000
4	11	15	1500
6	7.5	10	1000
8	4/5.5	5.5/7.5	750

Totally Enclosed Fan-Cooled Type, Squirrel-Cage Rotor.



NOTES:

1. FOOT MOUNTED IM1001.
2. TYPICAL DIMENSIONS ONLY FOR CERTIFIED DIMENSIONS REFER TO TECO.
3. FOR BELT OR DIRECT DRIVE.

FOR MAXe3MINING AND
AND MAXe3PREMIUM SEVERE DUTY

◇			
DWN.	EJ	01. 12. 15	<p>東元電機股份有限公司 TECO ELEC. & MACH. CO., LTD. TAIWAN R. O. C.</p>
CHKD.	DK	01. 12. 15	
APPD.	JF	01. 12. 15	
			REV : 00