

**TECO**

OUTLINE DIMENSIONS

MOTOR TYPE:

AEMBXZ—UC 1

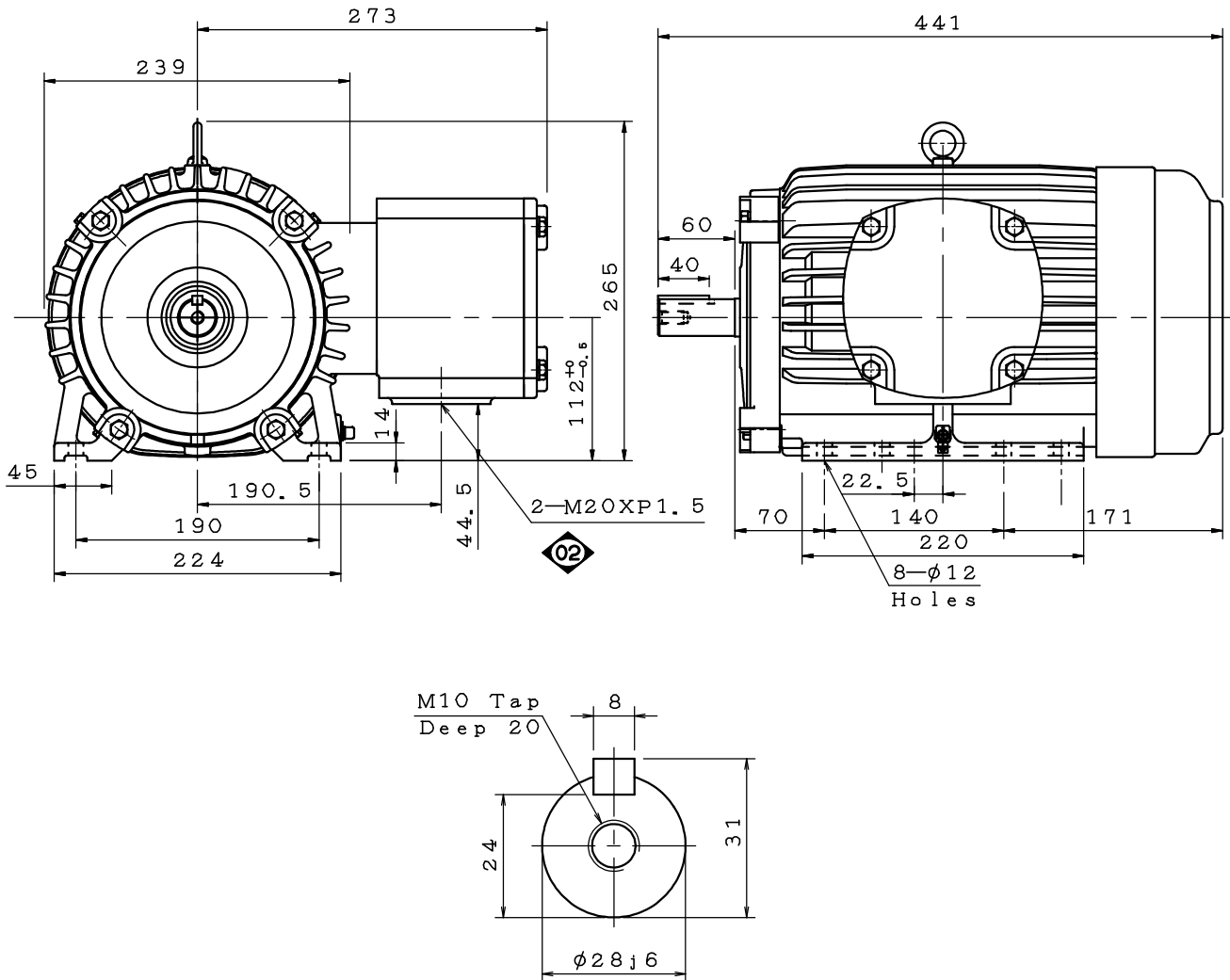
DATE APR-15-20

3-PHASE INDUCTION MOTOR

FRAME NO. 112M

Pole	HP	kW	Hz	VOLT	r/min
4	5.5	4	50	220—240/380—415	1500
Ins	Rating	Dimension in	Approx Weight	Bearings	
F	CONT.	mm	62 KG	DE:6306ZZC3 NDE:6306ZZC3	

Totally Enclosed Fan-Cooled Type. Squirrel-cage Rotor.



Note:

1. Ex db IIB T4 Gb & Ex db I Mb (IECEX/ATEX).
2. IP56 Protection.

TTAKG19336003

2

04.08.20

T箱出線孔修訂

徐永勵

**FOR APPROVAL**

Please confirm or comment, and return within 7 business days. Otherwise, these drawings will be deemed as certified and approved.

Approved by:

Order No. E0205291T1

DWG.	Y. L. HSU	10.09.19
CHKD.	Y. Y. CHEN	10.14.19
APPD.	BEN. YANG	10.14.19

**東元電機股份有限公司**  
**TECO Electric & Machinery Co., Ltd.**  
 TAIWAN

DWG NO.  
 31049R240612