

TECO

# OUTLINE DIMENSIONS 3-PHASE INDUCTION MOTOR

FRAME NO :

D80

POLES

KW

HP

SYNCH RPM

2

0.75/1.1

1/1.5

3000

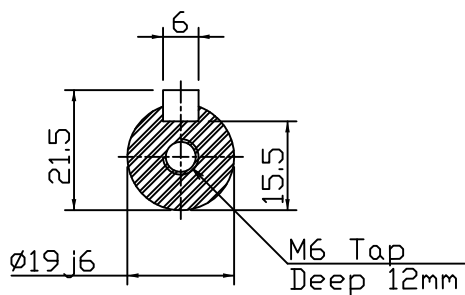
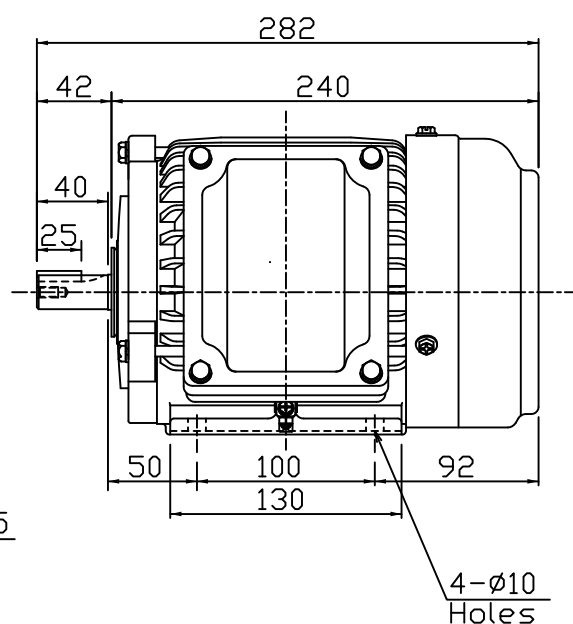
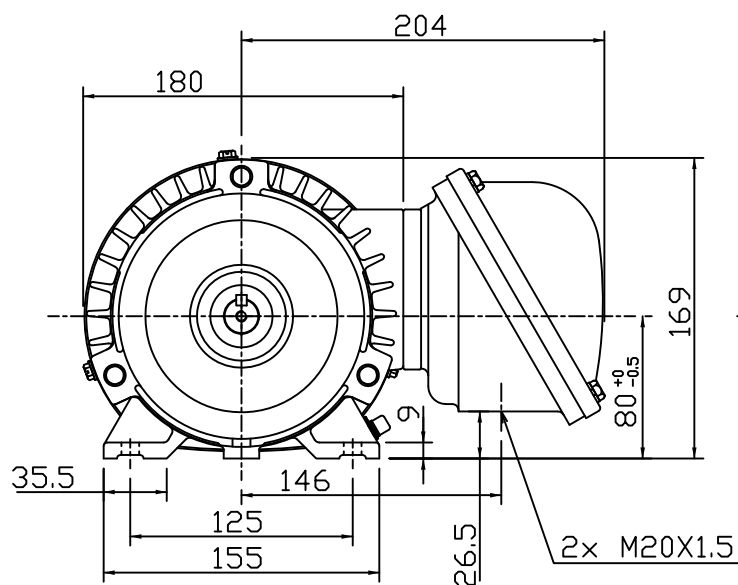
4

0.75

1

1500

Totally Enclosed Fan Cooled Type. Squirrel-cage Rotor.



Note:

1. IP55 Protection.
2. Ex de IIC T4, BASEEFA Approved.
3. With Thermistors.

FOR TECO FLAMEPROOF MOTOR



DWN.	AY	01.05.19
CHKD.	EJ	01.05.19
APPD.	LM	01.05.19

東元電機股份有限公司  
TECO ELEC. & MACH. CO., LTD.  
TAIWAN R.O.C.

TYPE:

AEHBXZ