

TECO

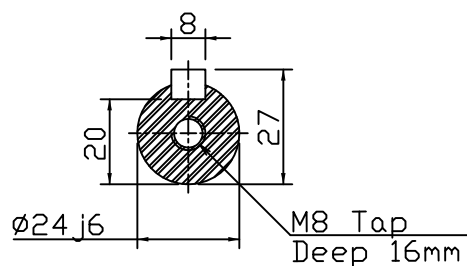
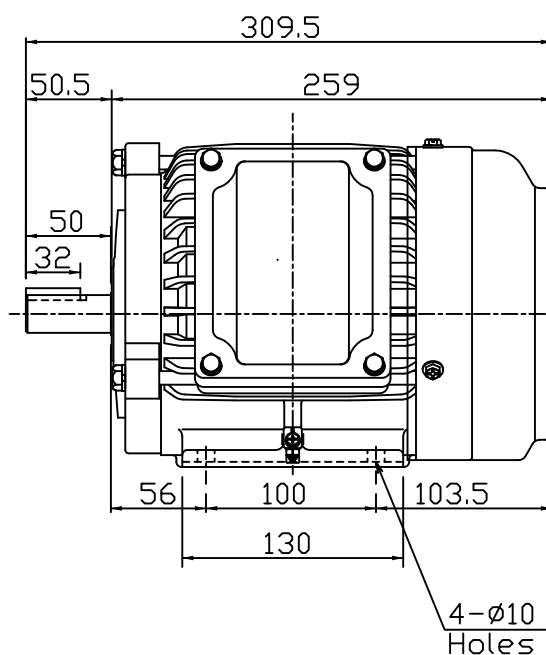
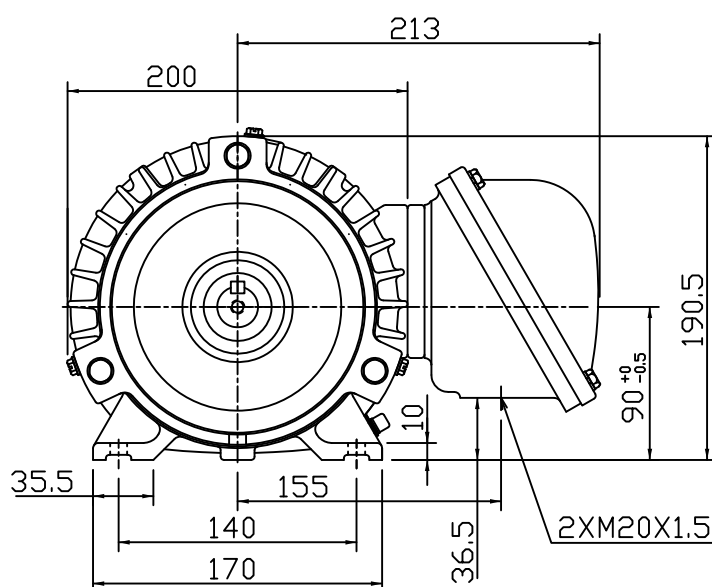
# OUTLINE DIMENSIONS 3-PHASE INDUCTION MOTOR

FRAME NO :

D90S

POLES	KW	HP	SYNCH RPM
2	1.5	2	3000
4	1.1	1.5	1500
6	0.75	1	1000
8	0.37	0.5	750

Totally Enclosed Fan-Cooled Type.Squirrel-Cage Rotor.



Note:

1. IP55 Protection.
2. Ex de IIC T4, BASEEFA Approved.
3. With Thermistors.

FOR TECO FLAMEPROOF MOTOR

◇			
DWN.	AY	01.05.19	<p>東元電機股份有限公司 TECO ELEC. &amp; MACH. CO., LTD. TAIWAN R.O.C.</p>
CHKD.	EJ	01.05.19	
APPD.	LM	01.05.19	
			TYPE: AEHBXZ