



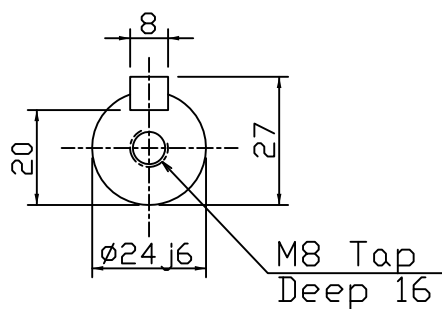
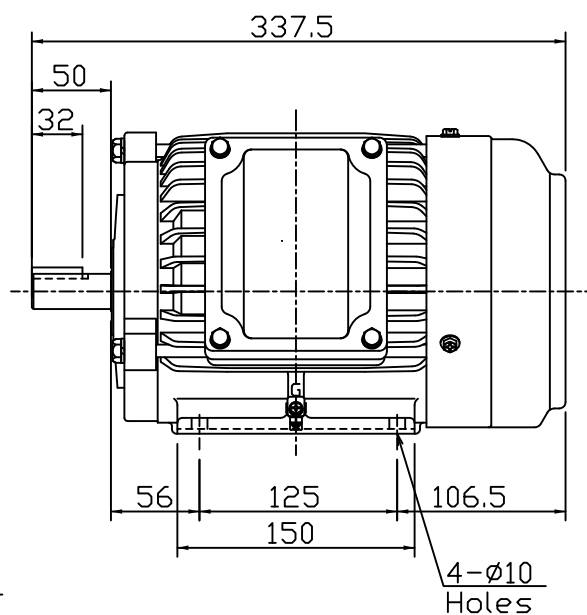
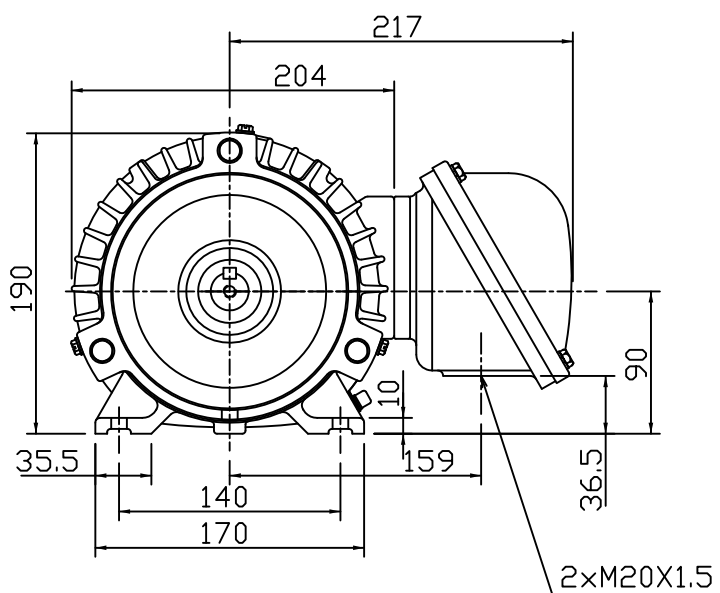
OUTLINE DIMENSIONS
3-PHASE INDUCTION MOTOR

FRAME NO :

D90L

POLES	KW	HP	SYNCH RPM
2	2.2	3	3000
4	1.5	2	1500
6	1.1	1.5	1000

Totally Enclosed Fan-Cooled Type.Squirrel-Cage Rotor.



Note:

1. IP55 Protection.
2. Ex de IIC T4, BASEEFA Approved.
3. With Thermistors.

FOR TECO FLAMEPROOF MOTOR

◇				
DWN.	AY	01.05.19	東元電機股份有限公司 TECO ELEC. & MACH. CO., LTD. TAIWAN R.O.C.	TYPE: AEHBXZ
CHKD.	EJ	01.05.19		
APPD.	LM	01.05.19		