

TECO

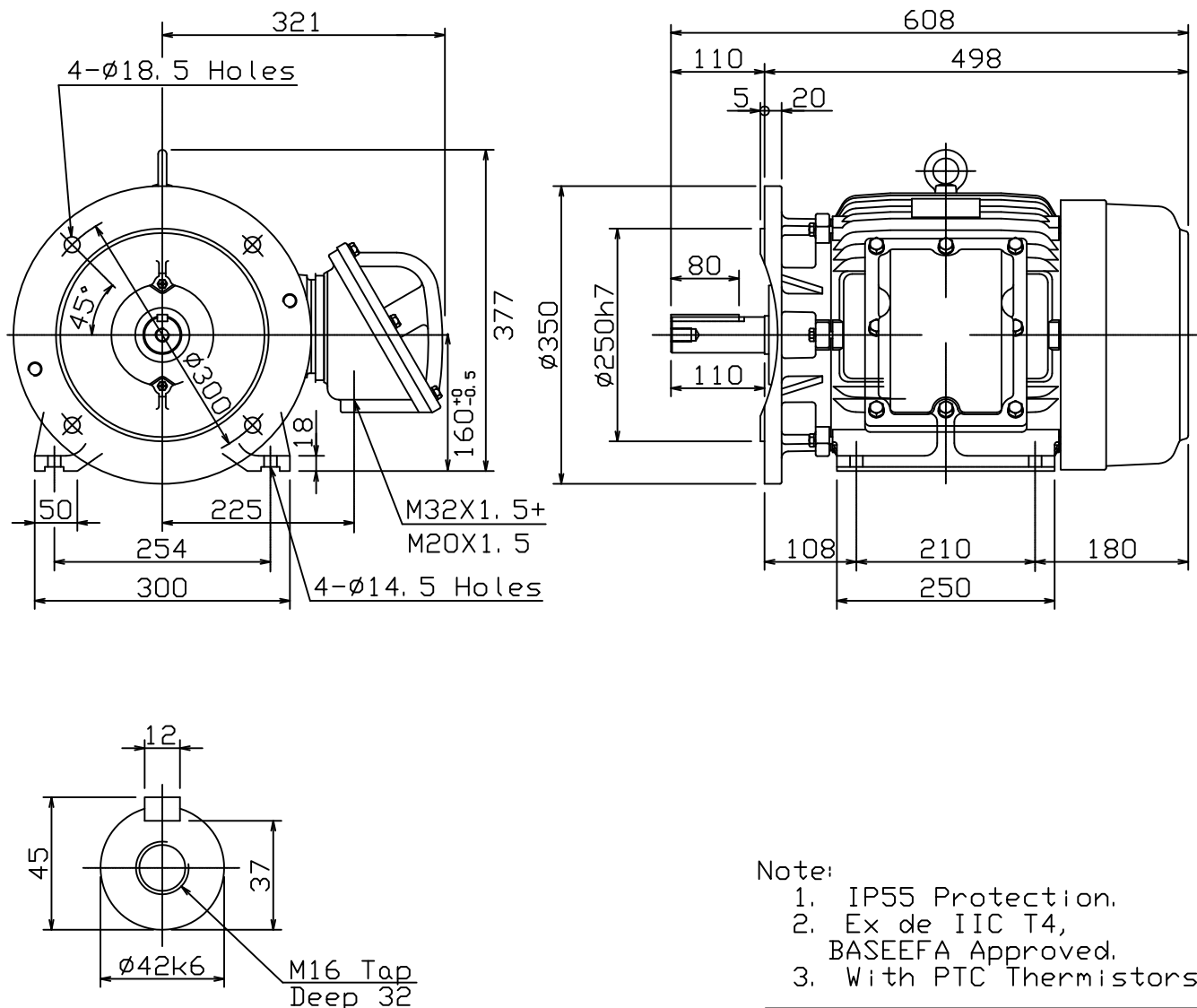
# OUTLINE DIMENSIONS 3-PHASE INDUCTION MOTOR

FRAME NO :

D160M

POLES	KW	HP	SYNCH RPM
2	11/15	15/20	3000
4	11	15	1500
6	7.5	10	1000
8	4/5.5	5.5/7.5	750

Totally Enclosed Fan-Cooled Type, Squirrel-Cage Rotor.



Note:

1. IP55 Protection.
2. Ex de IIC T4, BASEEFA Approved.
3. With PTC Thermistors.

FOR TECO FLAMEPROOF MOTOR

DWN.	AY	01. 05. 19	<p>東元電機股份有限公司 TECO ELEC. &amp; MACH. CO., LTD. TAIWAN R. O. C.</p>	<p>TYPE: AEHBXZ</p>
CHKD.	EJ	01. 05. 19		
APPD.	LM	01. 05. 19		