

TECO

OUTLINE DIMENSIONS 3-PHASE INDUCTION MOTOR

FRAME NO :

D160L

POLES

KW

HP

SYNCH RPM

2

18.5

25

3000

4

15

20

1500

6

11

15

1000

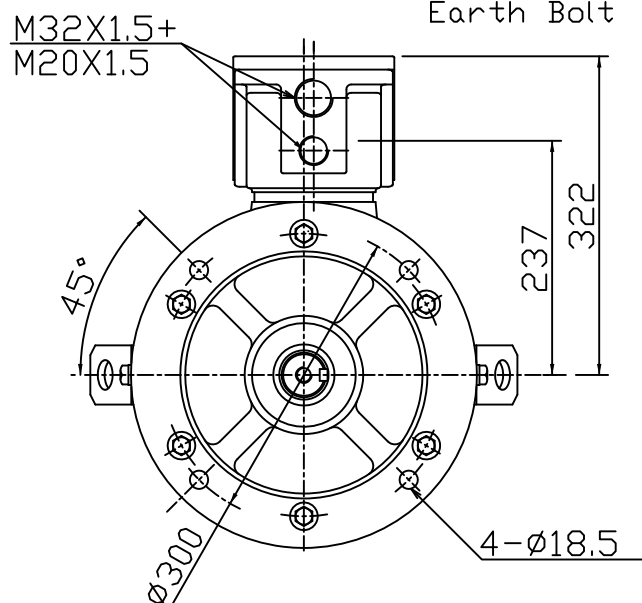
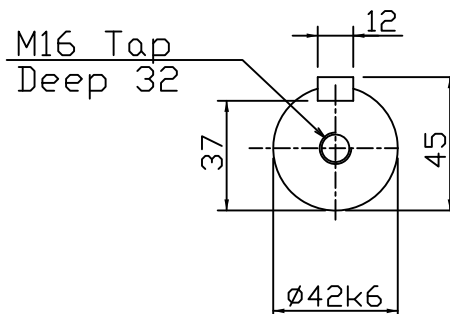
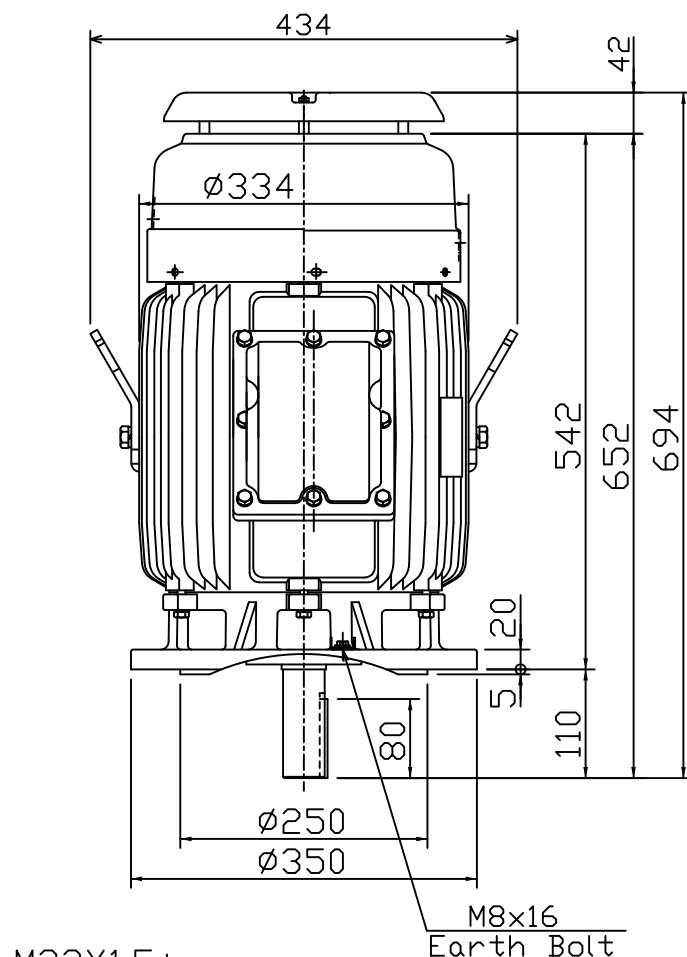
8

7.5

10

750

Totally Enclosed Fan-Cooled Type.Squirrel-Cage Rotor.



Note:

1. IP55 Protection.
2. Ex de IIC T4, BASEEFA Approved.
3. With Thermistors.

FOR TECO FLAMEPROOF MOTOR



DWN.	AY	01.05.19
CHKD.	EJ	01.05.19
APPD.	LM	01.05.19

東元電機股份有限公司
TECO ELEC. & MACH. CO., LTD.
TAIWAN R.O.C.

TYPE:

AEUBXZ