

TECO

OUTLINE DIMENSIONS
3-PHASE INDUCTION MOTOR

FRAME NO :

D180MC

POLES

KW

HP

SYNCH RPM

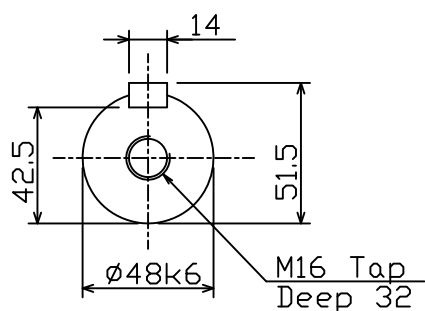
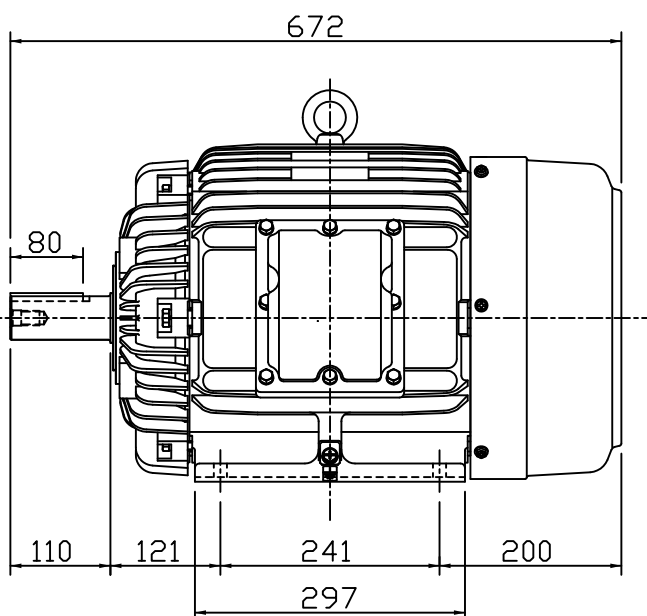
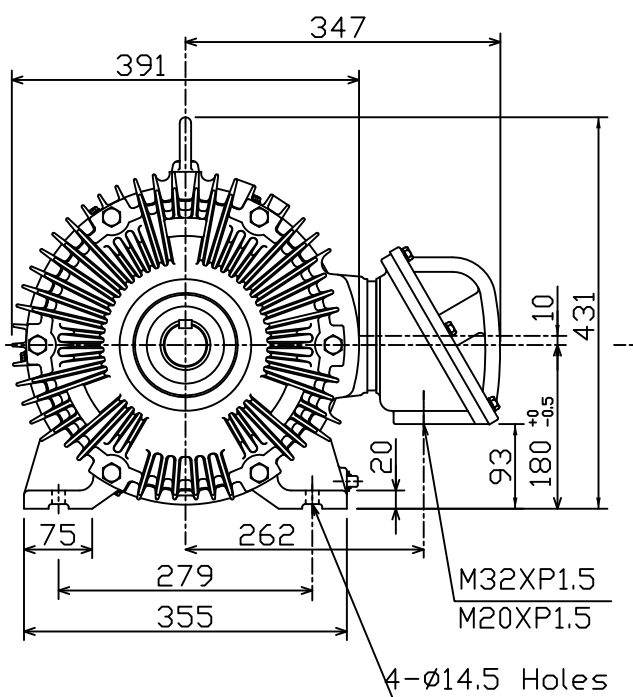
4

18.5

25

1500

Totally Enclosed Fan-Cooled Type.Squirrel-Cage Rotor.



Note:

1. Ex de IIC T4, BASEEFA Approved.
2. IP55 Protection.
3. With Thermistors.

FOR TECO FLAMEPROOF MOTOR



DWN.	AY	01.05.19
CHKD.	EJ	01.05.19
APPD.	LM	01.05.19

東元電機股份有限公司
TECO ELEC. & MACH. CO., LTD.
TAIWAN R.O.C.

TYPE:

AEHBXZ