

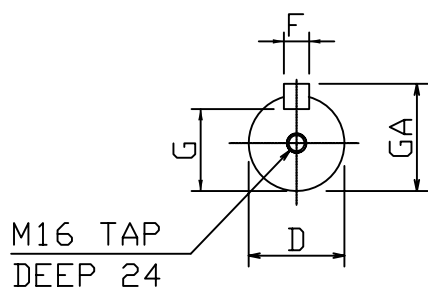
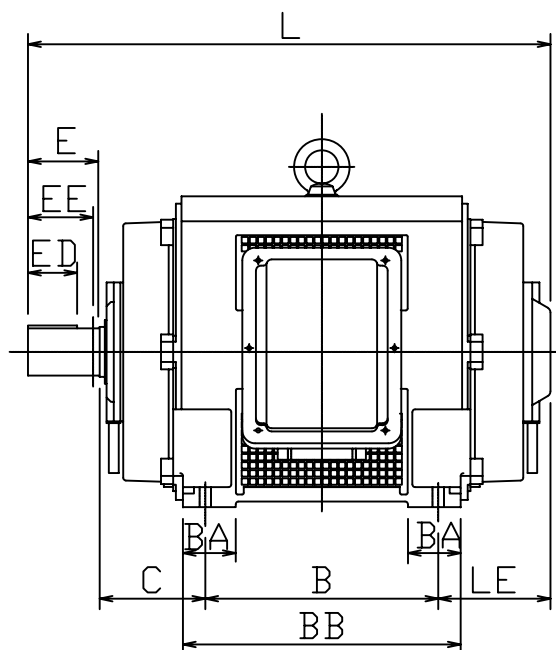
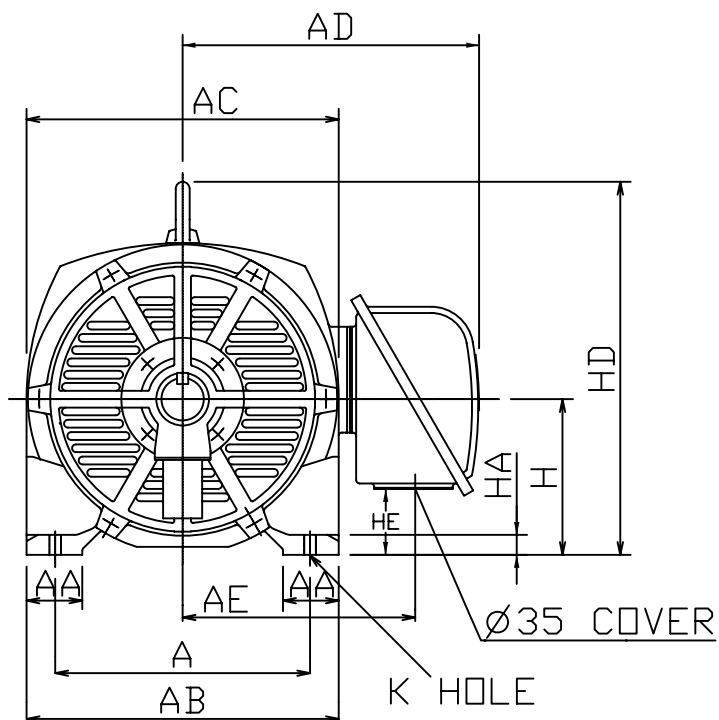


OUTLINE DIMENSIONS 3-PHASE INDUCTION MOTOR

FRAME NO :
C160L

POLES	KW	HP	SYNCH RPM
2	18.5/22	25/30	3000
4	15/18.5	20/25	1500
6	11	15	1000

Open Drip-proof Type Squirrel-Cage Rotor.



NOTES:

1. FOOT MOUNTED IM1001.
2. TYPICAL DIMENSIONS ONLY FOR CERTIFIED DIMENSIONS REFER TO TECO.
3. FOR DIRECT DRIVE.

DIMENSIONS IN MM

FRAME NO.		A	AA	AB	AC	AD	AE	B	BA	BB	C	D
C160L		254	50	300	323	264	219	254	—	300	108	48
E	ED	EE	F	G	GA	H	HA	HD	HE	K	L	LE
110	80	—	14	42.5	51.5	160	18	375	96	15	572	100

DWN.	EJ	01. 10. 09	<p>東元電機股份有限公司 TECO ELEC. & MACH. CO., LTD. TAIWAN R. O. C.</p>	DWG NO.	18C2 22C2
CHKD.	DK	01. 10. 09			15C4 18C4
APPD.	JF	01. 10. 09		REV : 00	11C6