

TECO

OUTLINE DIMENSIONS
3-PHASE INDUCTION MOTOR

FRAME NO :

C225MC

POLES

KW

HP

SYNCH RPM

4

55

75

1500

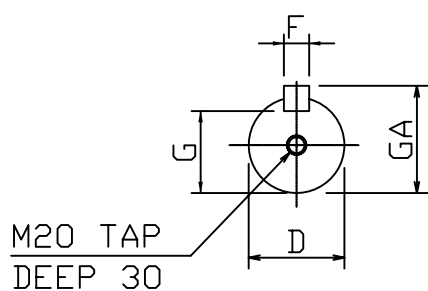
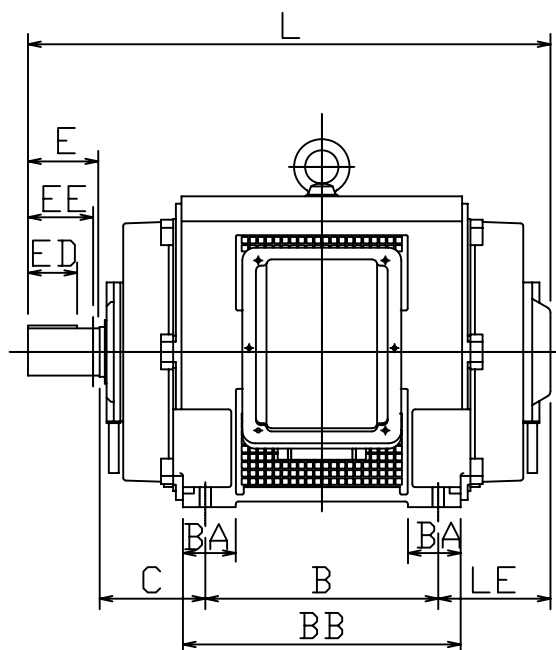
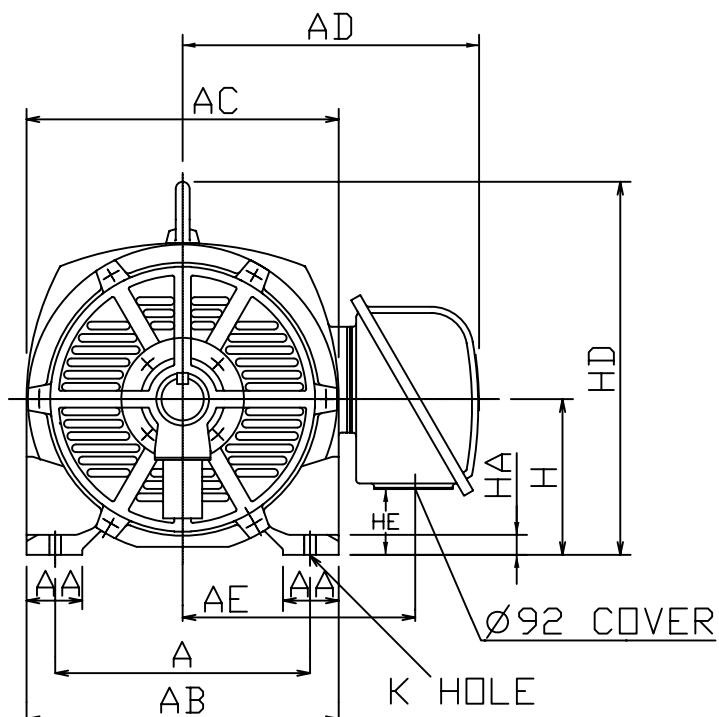
6

37

50

1000

Open Drip-proof Type Squirrel-Cage Rotor.



NOTES:

1. FOOT MOUNTED IM1001.
2. TYPICAL DIMENSIONS ONLY FOR CERTIFIED DIMENSIONS REFER TO TECO.
3. FOR DIRECT DRIVE.

DIMENSIONS IN MM

FRAME NO.		A	AA	AB	AC	AD	AE	B	BA	BB	C	D
C225MC		356	90	430	444	381	312	311	—	380	149	65
E	ED	EE	F	G	GA	H	HA	HD	HE	K	L	LE
140	110	—	18	58	69	225	30	522	153	19	751	151

DWN.	EJ	01. 10. 09
CHKD.	DK	01. 10. 09
APPD.	JF	01. 10. 09

東元電機股份有限公司
TECO ELEC. & MACH. CO., LTD.
TAIWAN R. O. C.

DWG NO. 55C4 37C6
REV : 00