



# OUTLINE DIMENSIONS 3-PHASE INDUCTION MOTOR

FRAME NO :

C280MA

POLES

2

KW

185

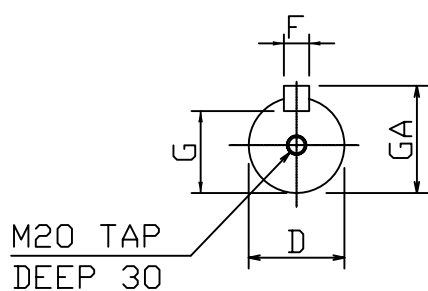
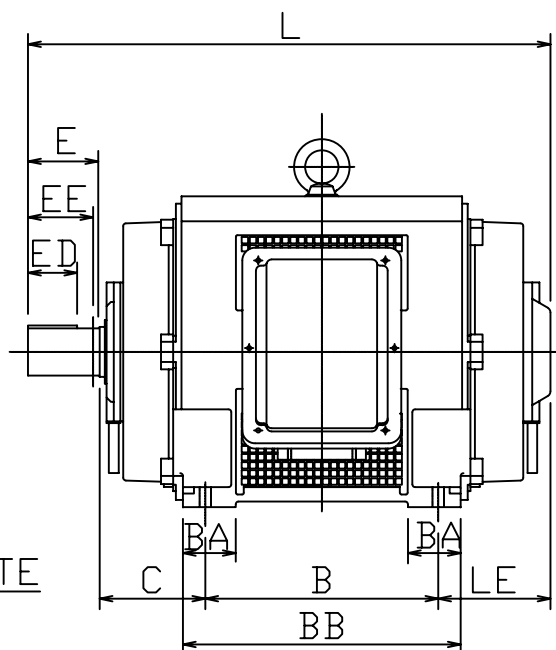
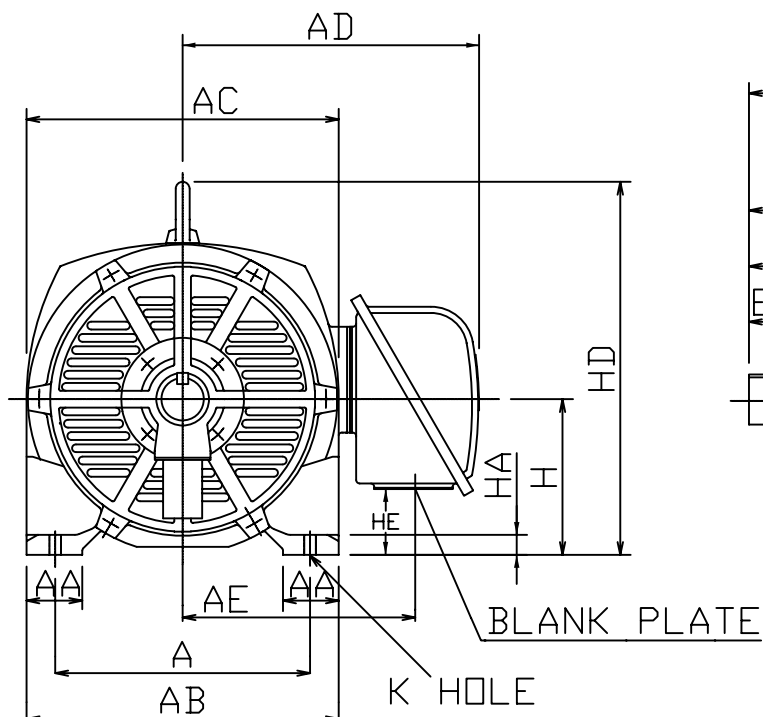
HP

250

SYNCH RPM

3000

Open Drip-proof Type Squirrel-Cage Rotor.



## NOTES:

1. FOOT MOUNTED IM1001.
2. TYPICAL DIMENSIONS ONLY FOR CERTIFIED DIMENSIONS REFER TO TECO.
3. FOR DIRECT DRIVE.

DIMENSIONS IN MM

FRAME NO.		A	AA	AB	AC	AD	AE	B	BA	BB	C	D
C280MA		457	100	560	560	520	405	419	—	500	190	65
E	ED	EE	F	G	GA	H	HA	HD	HE	K	L	LE
140	110	—	18	58	69	280	36	653	101	24	942	193

DWN.	EJ	01. 10. 09
CHKD.	DK	01. 10. 09
APPD.	JF	01. 10. 09

東元電機股份有限公司  
TECO ELEC. & MACH. CO., LTD.  
TAIWAN R. O. C.

DWG NO. 185C2  
REV : 00