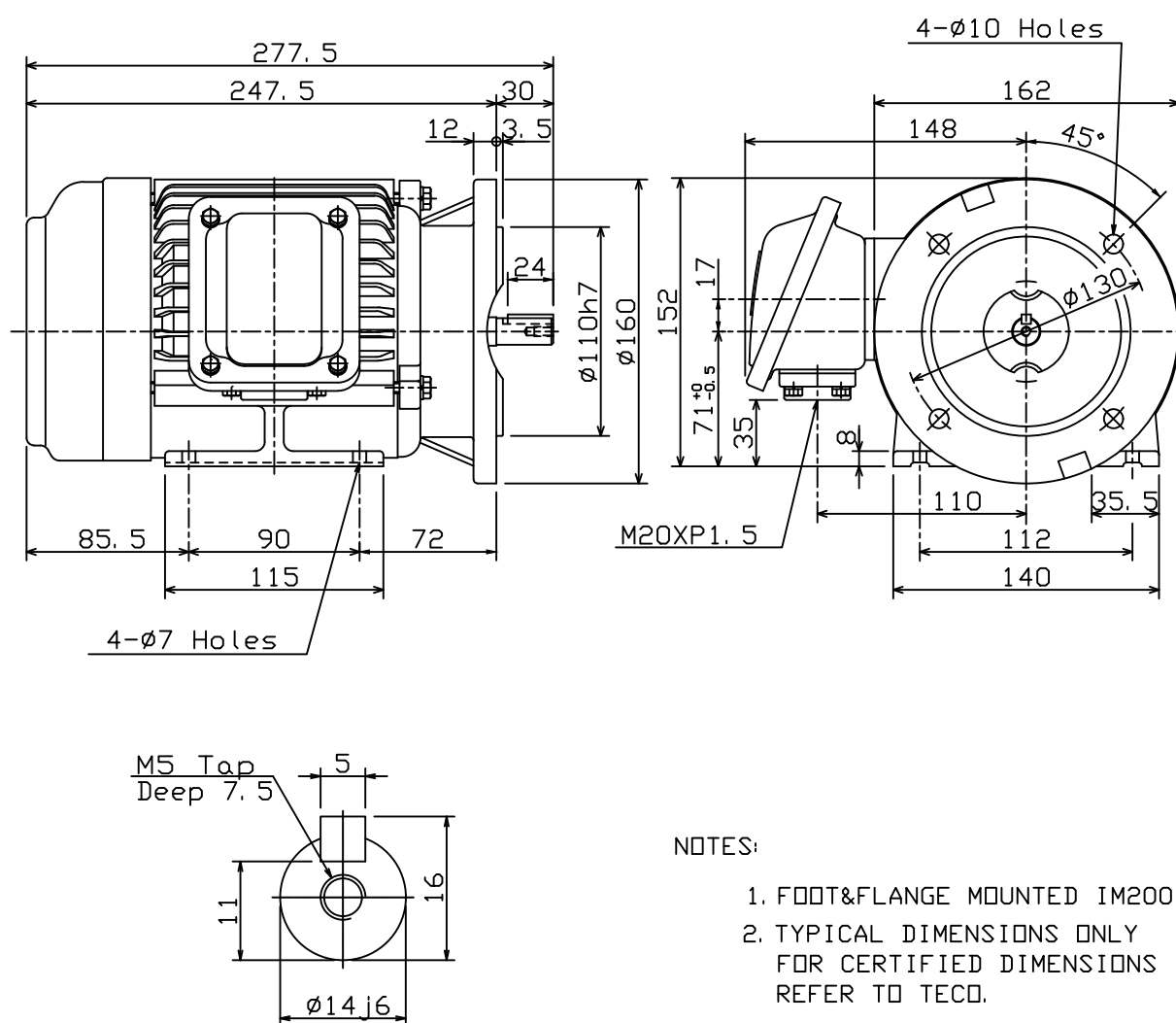


	OUTLINE DIMENSIONS 3-PHASE INDUCTION MOTOR	FRAME NO : D71
---	---	-------------------

POLES	KW	HP	SYNCH RPM
2	0.37	0.50	3000
2	0.55	0.75	3000
4	0.37	0.50	1500
6	0.18	0.25	1000

Totally Enclosed Fan-Cooled Type, Squirrel-Cage Rotor.



NOTES:

1. FOOT&FLANGE MOUNTED IM2001.
2. TYPICAL DIMENSIONS ONLY FOR CERTIFIED DIMENSIONS REFER TO TECO.
3. FOR BELT OR DIRECT DRIVE.

FOR MAXE3MINING AND
MAXE3PREMIUM SEVERE DUTY



DWN.	EJ	01. 12. 15	東元電機股份有限公司 TECO ELEC. & MACH. CO., LTD. TAIWAN R. O. C.	REV : 00
CHKD.	DK	01. 12. 15		
APPD.	JF	01. 12. 15		