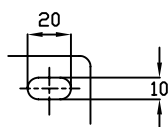
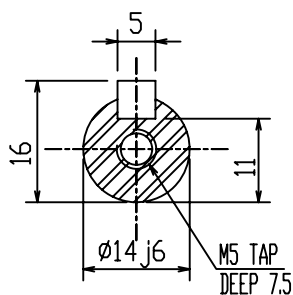
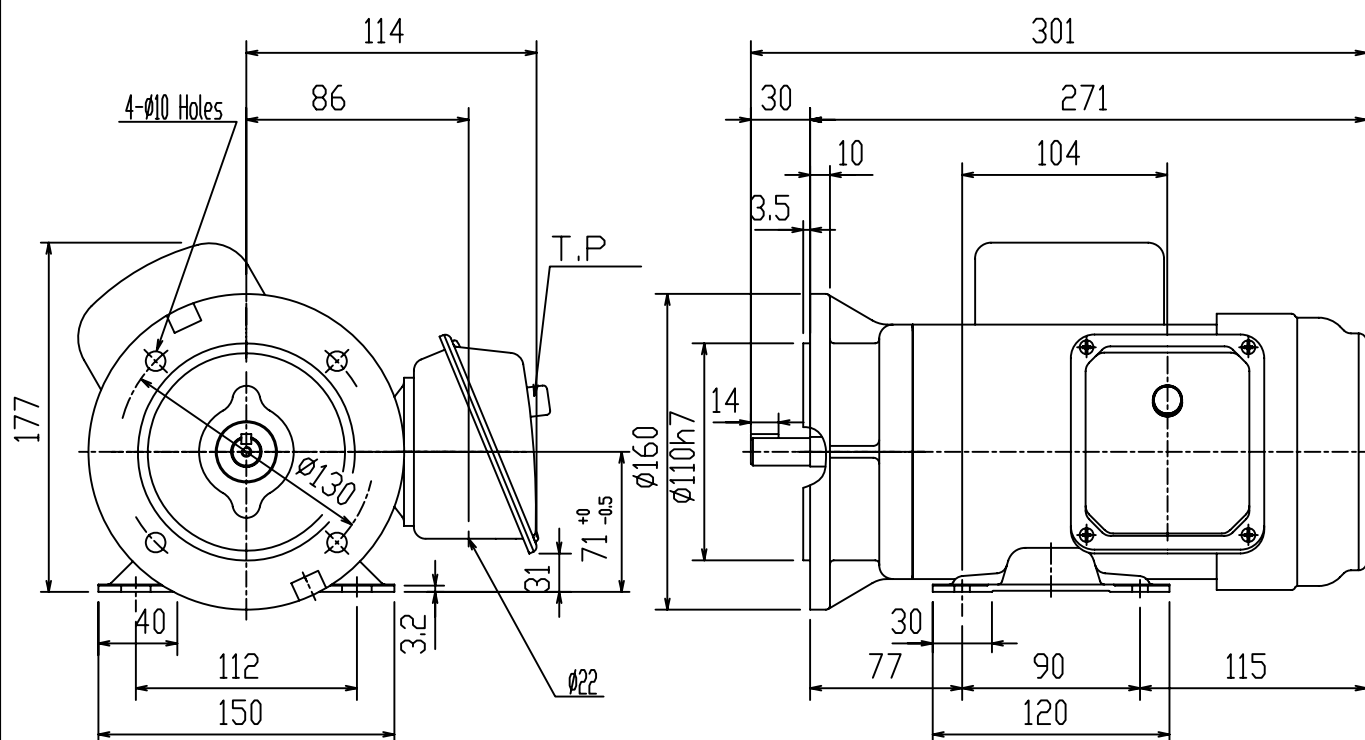


POLES	KW	HP	SYNCH RPM
2	0,25	0,33	3000
4	0,18/0,25	0,25/0,33	1500

Totally Enclosed Fan Cooled Capacitor-Start & Run Type.
Squirrel-Cage Rotor



NOTES:

- 1.FOOT&FLANGE MOUNTED IM2001.
2.TYPICAL DIMENSIONS ONLY
FOR CERTIFIED DIMENSIONS
REFER TO TECO.
3.FOR BELT OR DIRECT DRIVE.

DWN.	EJ	01-10-09	東元電機股份有限公司 TECO Electric & Machinery Co., Ltd. TAIWAN	DWG NO.	0.25BF2
CHKD.	DK	01-10-09		0.18BF4	
APPD.	JF	01-10-09		0.25BF4	