



OUTLINE DIMENSIONS
1-PHASE INDUCTION MOTOR

FRAME :

D80

POLES

2

KW

1.1

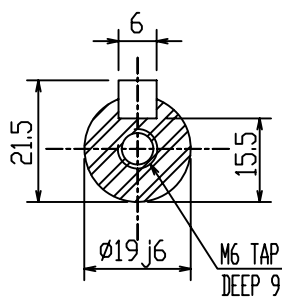
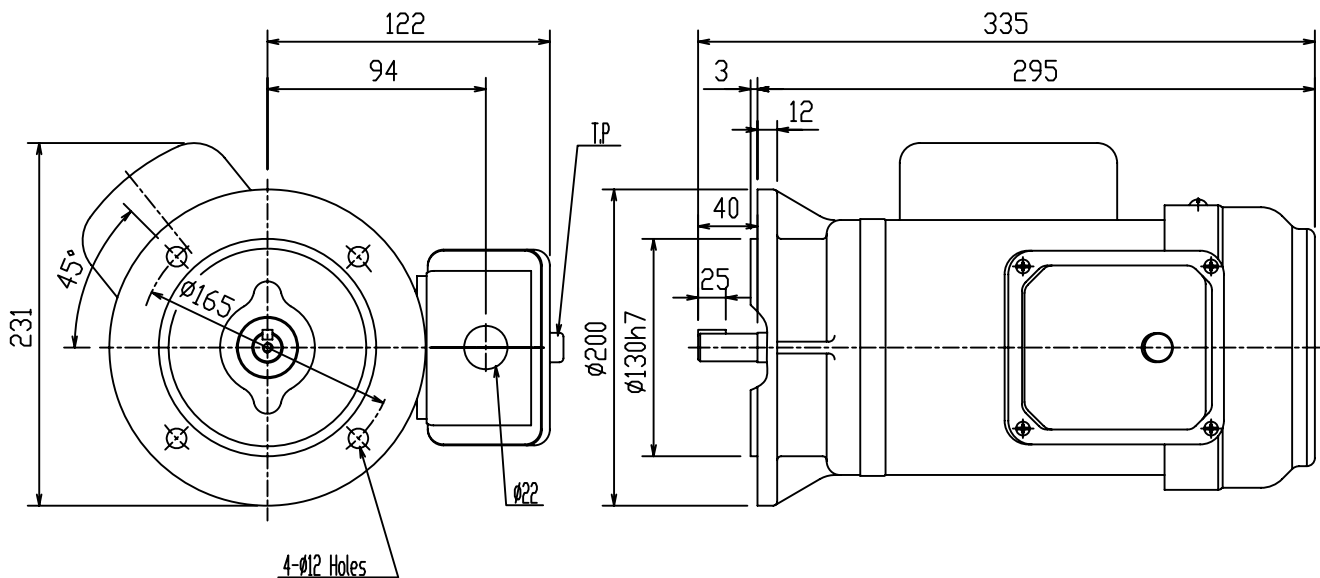
HP

1.5

SYNCH RPM

3000

Totally Enclosed Fan Cooled Capacitor-Start & Run Type.
Squirrel-Cage Rotor



NOTES:

- 1.FLANGE MOUNTED IM3001.
- 2.TYPICAL DIMENSIONS ONLY
FOR CERTIFIED DIMENSIONS
REFER TO TECO.
- 3.FOR BELT OR DIRECT DRIVE.

DWN.	EJ	01.10.09
CHKD.	DK	01.10.09
APPD.	JF	01.10.09

東元電機股份有限公司
TECO Electric & Machinery Co., Ltd.
TAIWAN

DWG NO. 1.1BV2