



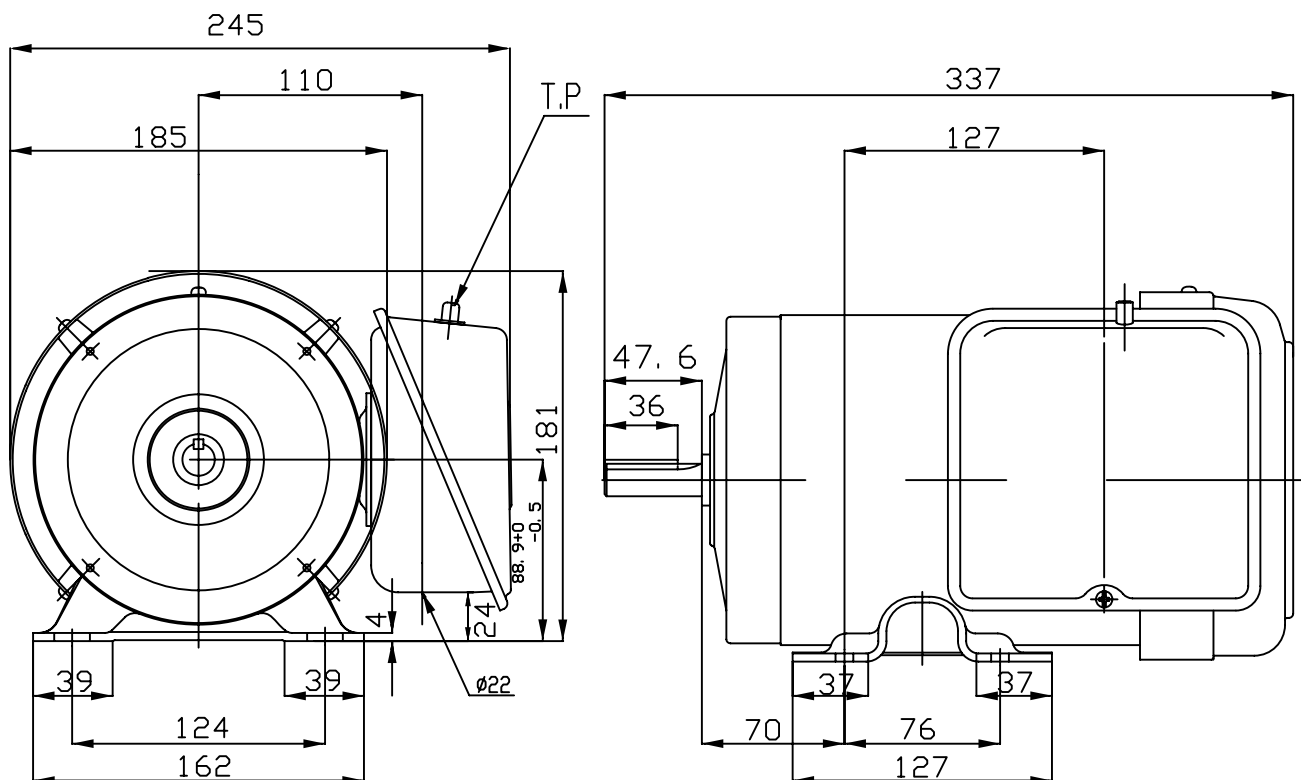
OUTLINE DIMENSIONS
1-PHASE INDUCTION MOTOR

FRAME :

B56

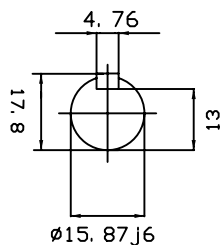
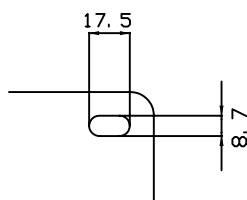
POLES	KW	HP	SYNCH RPM
2	0.75	1	3000
4	0.55	0.75	1500

Totally Enclosed Fan Cooled Capacitor-Start Induction Run Type
Squirrel-Cage Rotor



NOTES:

- 1.FOOT MOUNTED IM1001.
- 2.TYPICAL DIMENSIONS ONLY
FOR CERTIFIED DIMENSIONS
REFER TO TECO.
- 3.FOR BELT OR DIRECT DRIVE.



DWN.	EJ	01.10.09
CHKD.	DK	01.10.09
APPD.	JF	01.10.09

東元電機股份有限公司
TECO Electric & Machinery Co., Ltd.
TAIWAN

DWG NO.

0.75BB2
0.55BB4